



**eminent** 2000 *Grand theatre*



# eminent 2000 Grand Theatre

## UPPER MANUAL

### Upper Manual Tibia

#### Drawbars:

Drawbar 16'  
 " 8'  
 " 5 1/3'  
 " 4'  
 " 2 2/3'  
 " 2'  
 " 1 3/5'  
 " 1 1/3'  
 " 1'

Tibia Drawbars Volume

### Upper Manual Stops

#### Principals:

Diapason 16'  
 Principal 8'  
 String 8'  
 Salicional 4'  
 Octave 4'  
 Quint 2 2/3'  
 Octave 2'

#### Solo's:

Cello 16'  
 Violin 8'  
 Bassoon 16'  
 English Horn 16'  
 Oboe 8'  
 Bass Clarinet 16'  
 Clarinet 8'  
 French Horn 16'  
 Trombone 16'  
 Trumpet 8'  
 Flute 8'

#### Percussion-Sustains:

Accent  
 Harpsicord  
 Cymbalo  
 Piano  
 Harp  
 Vibraphone  
 Music Box

### Upper Manual

#### Push Buttons:

#### String Ensemble Buttons:

Upper Manual 8'  
 Upper Manual 4'  
 Sustains 8' | Upper/Lower  
 Sustains 4' | Manual

#### Percussion Instruments

#### Buttons:

Marimba  
 Xylophone

## Percussions

### Percussion Tibia

#### Drawbars:

Button 16'  
 " 8'  
 " 5 1/3'  
 " 4'  
 " 2 2/3'  
 " 2'  
 " 1 3/5'  
 " 1 1/3'  
 " 1'

#### Percussion Stops:

Button Percussion Stops

#### Repeat Percussion:

Button Repeat Stops

#### Wah and Wow:

Button Wah  
 " Wow  
 " Echo

#### Effect Controls:

Percussion Length Tibia Drawb.  
 Percussion Length Stops  
 Repeat Rate  
 Wah  
 Wow

#### Percussion-Sustains

#### Controls:

Volume  
 Sustain Length  
 Tremolo Rate

#### Modulators Tibia Drawbars

#### Upper/Lower Manual:

Button Normal  
 " Chorus  
 " Vibrato  
 " Multivoice  
 " Orbitone

#### Modulators Upper Manual

#### Stops:

Button Normal  
 " Chorus  
 " Vibrato  
 " Vibra  
 " Multivoice  
 " Orbitone

## Modulators Percussion-

### Sustains:

Button Normal  
 " Chorus  
 " Vibrato  
 " Orbitone

#### Button Tremolo

#### Upper Manual Selectors:

Button String Ensemble  
 " Percussion-Sustains  
 " Stops  
 " Tibia Drawbars

#### Button Cancel Attack Solo's

#### Selector Lights:

Upper Manual Stops  
 Upper Manual Tibia Drawbars  
 Upper Manual Percussion-Sustain  
 Upper Manual String Ensemble

## LOWER MANUAL

### Lower Manual Tibia

#### Drawbars:

Drawbar 8'  
 " 4'  
 " 2 2/3'  
 " 2'

Tibia Drawbars Volume

#### Lower Manual Stops:

Principal 8'  
 Reed 8'  
 Flute 8'  
 String 8'  
 String 4'  
 Octave 4'  
 Octave 2'  
 Lower Manual Stops Volume

#### Percussion-Sustains:

Accent  
 Harpsicord  
 Cymbalo  
 Piano  
 Harp  
 Vibraphone  
 Music Box

#### String Ensemble Buttons:

Lower Manual 8'  
 Lower Manual 4'  
 Sustains 8' | Upper/Lower  
 Sustains 4' | Manual

## Percussion-Sustain

### Controls:

Volume  
 Sustain Length  
 Tremolo Rate

## Modulators Lower Manual

### Stops:

Button Normal  
 " Chorus  
 " Vibrato  
 " Multivoice  
 " Orbitone

## Modulators Percussion-

### Sustains:

Button Normal  
 " Chorus  
 " Vibrato  
 " Orbitone

#### Button Tremolo

#### Arpeggio:

Button Manual Start  
 Mode →  
 " Manual Start  
 Mode ←  
 " Manual Start  
 Mode ↔  
 " Octaves 2  
 " Octaves 4  
 " Memory  
 " Rithmix Tempo  
 " String Ensemble  
 " Sustains  
 " Percussion-Sustains  
 " Arpeggio 1  
 " Arpeggio 2  
 " Strum  
 Slide Control Tempo

#### Lower Manual Selectors:

Button String Ensemble  
 " Percussion-Sustains  
 " Stops  
 " Tibia Drawbars

#### Selector Lights:

Lower Manual Stops  
 Lower Manual Tibia Drawbars  
 Lower Manual Percussion-Sust.  
 Lower Manual String Ensemble  
 Arpeggio Sustains  
 Arpeggio Percussion Sustains

#### String Ensemble Controls:

Slider Sustain Length  
 " Crescendo  
 " Volume

## PEDAL

### Pedal Tibia Drawbars:

Drawbar 16'  
 " 8'  
 " 4'

### Pedal Stops:

Tuba 16'  
 Bassoon 8'  
 String Bass 8'  
 Bass Guitar 8'  
 Pedal Stops Volume  
 Sustain Length

### String Ensemble:

Button Cello 8'  
 " Contrabass 16'  
 Slider Pedal Volume

#### Button Auto Mute Pedal

#### Pedal Selectors:

Button String Ensemble  
 " Stops  
 " Tibia Drawbars

#### Selector Lights:

Pedal Stops  
 Pedal Tibia Drawbars  
 Pedal String Ensemble

#### Main Controls

Switch Off/On with Pilot Light  
 Tuning Control  
 Button Orbitone Chorus/  
 Tremolo  
 Drawbar Vibrato  
 Drawbar Reverberation

#### Knee Lever Controls:

Button Sustain Short/Long →  
 " Orbitone  
 " Tremolo/Chorus ↔  
 " Arpeggio  
 " Start/Stop ↔  
 " Solo's Upper Manual  
 " Percussion-Sustains  
 " Lower Manual  
 " String Ensemble  
 " Sustain Lower Manual

#### Rithmix:

Button Start  
 " Pedal Start  
 " Waltz  
 " March  
 " Swing  
 " Rock  
 " Slow Rock  
 " Cha cha  
 " Samba  
 " Bossa Nova  
 Slider Rithmix Volume  
 " Rithmix Tempo  
 Tempo Light

## EXTRA:

### Rith-o-matic

Button Start  
 " Pedal Start  
 " Waltz  
 " March  
 " Swing  
 " Rock  
 " Slow Rock  
 " Cha cha  
 " Samba  
 " Bossa Nova  
 Slider Rithmix Volume  
 Slider Rithmix Tempo  
 Tempo Light.

### Accompaniment

Button Piano  
 " Banjo  
 " Guitar

### Automatic Bass:

Button Latin  
 " Shuffle  
 " Rock  
 " Boogie  
 " Prime Quint  
 " Prime  
 " Bass Rhythm  
 " Bass Guitar  
 " String Bass

### Chord Memory:

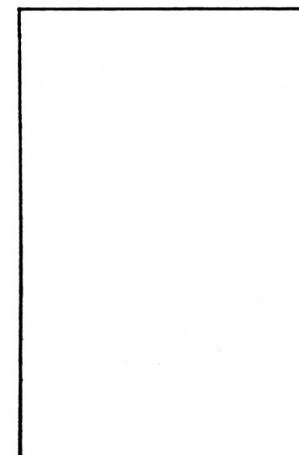
Button Lower Manual  
 " Upper Manual

### Button Manual Start

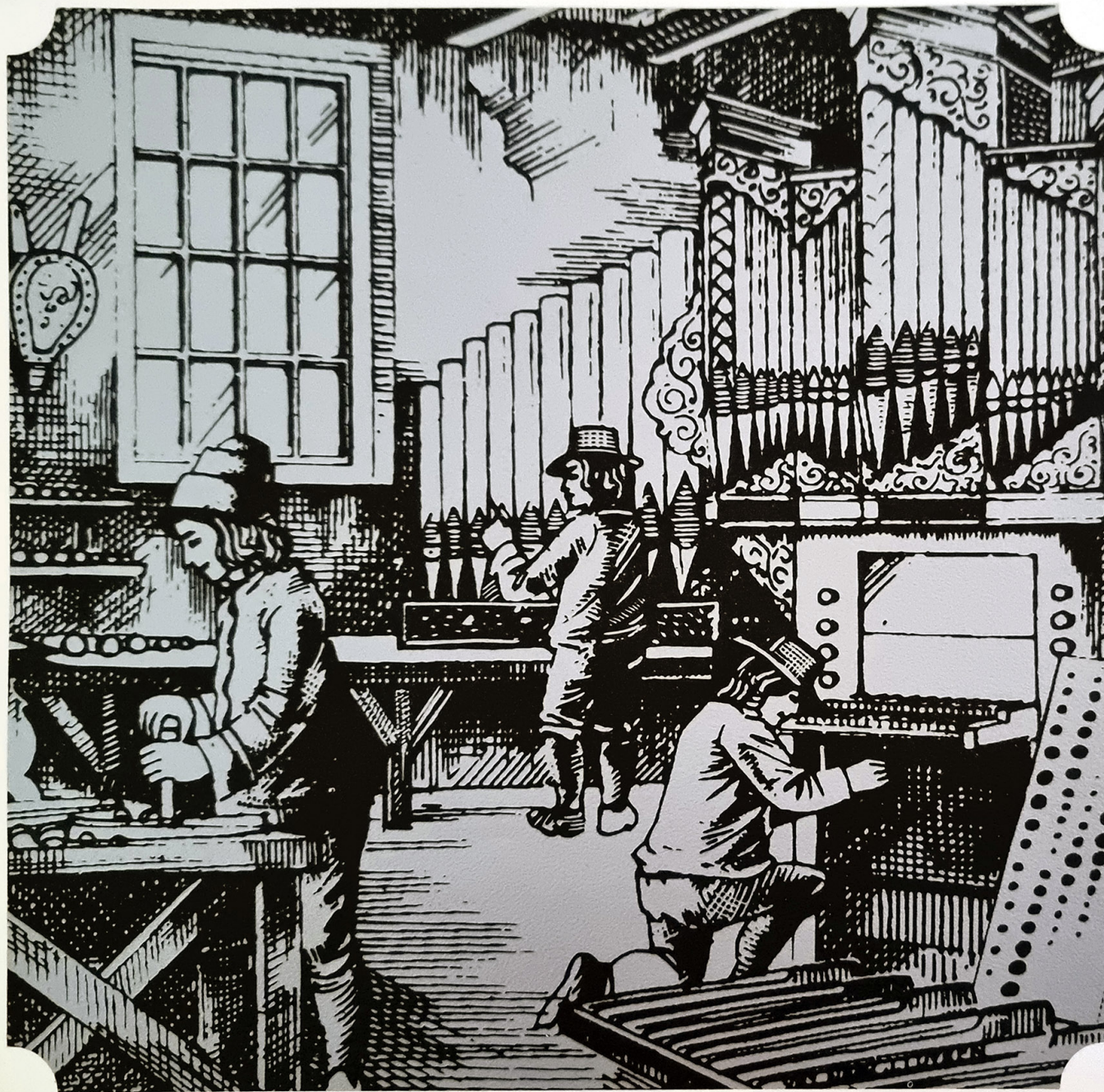
### Button "On"

### Slider Volume Accomp.

### Cassette Recorder







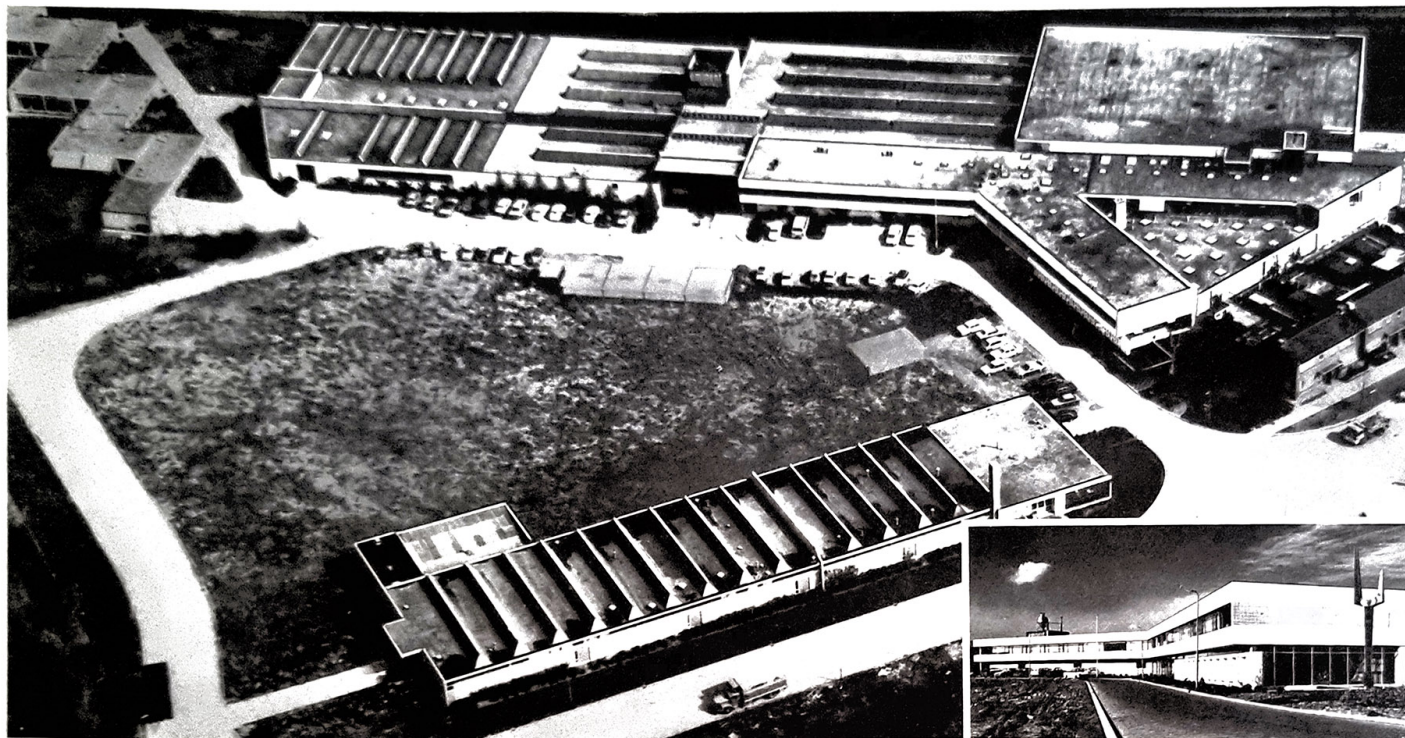
**eminent**  
**2000** *Grand theatre*







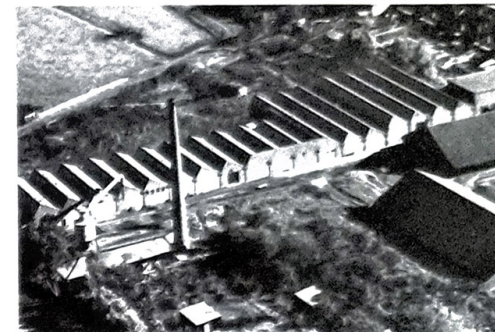




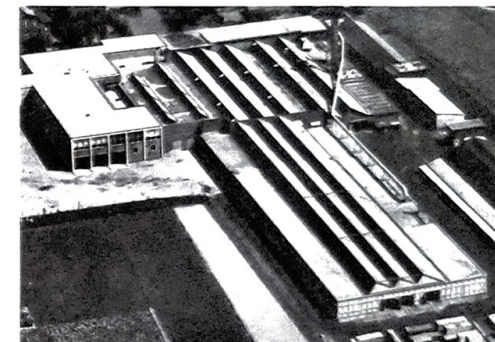
Bodegraven. Main building for electronic production and metal work.



Front of main building.



Waddinxveen. Wood storage place.



Waddinxveen. Organ cabinet assembly.

## Eminent builds the organ just right for you: the 2000 Grand Theatre

Europe's largest organ maker, with an annual production running into several thousand, composed an ensemble of innumerable organ possibilities in an enthralling harmonious whole.

The Eminent organs are exported to over 65 countries throughout the world.

Eminent organs meet the most demanding technical requirements as codified in the C.E.E. rules (certification body of the international commission on rules for

the approval of electronic equipment).

A number of governments have also added their own specific demands to these international standards, which are met before certification is granted for their respective countries.

Internationally renowned organists have expressed their musical admiration for the Eminent 2000 Grand Theatre. The organ built with you in mind too.

**KWIK PLAY MUSIC HOUSE**  
PROP. N. KUIPER — J. KRIGE 707-1666  
PIANO & ORGAN TUNING — SALES — SERVICING  
301-303 CHAPEL ROAD, BANKSTOWN 2200

**eminent** 2000 *Grand Theatre*